

The 'DIS' and 'DSSF' ranges of surface 'Direct / Indirect' luminaires have been created to optimise the advantages of T5 lamp technology.

The canopy is constructed from rolled zintec sheet steel with a profiled perforated lamp shield and finished RAL9010 20% gloss. Alternative paint finishes available on request.

Fused high frequency control gear is offered as standard with analogue or digital dimmable control gear optional. High output T5 lampways are also available.

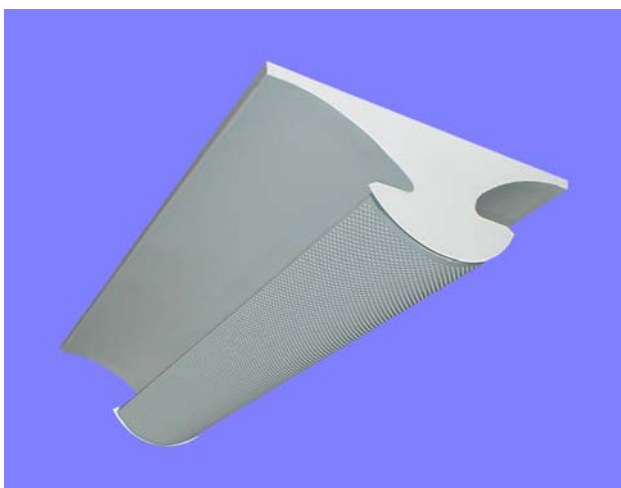
The micro perforated lamp shield is finished to match canopy as standard, but also available in specular or semi specular aluminium and retained without the use of tooling. For reduced glare and maintenance purposes a wipe clean opal polycarbonate Tp (a) plexi lens is retained within the lamp shield.



SPECIFICATION

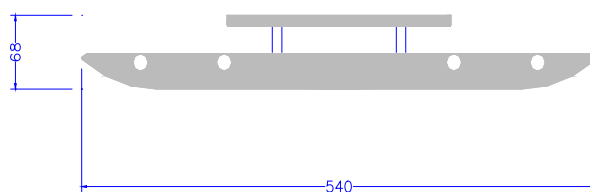
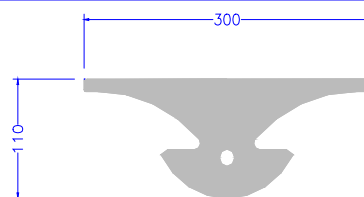
Body

- Rigidly constructed body with laser cut ends
- Integral fused high frequency control gear
- Alternative gear options available
- Luminaires shown : DSSF66 414 WBL (top) DIS123 228 (bottom)
- Diffused perforated basket



Options

- **SSB** : Semi specular aluminium perforated basket
- **PSS** : Specular aluminium perforated basket
- **WB** : Specular Miro wedge louvre attachment
- **WBL** : White blade with semi specular reflector louvre



Cat. No.	Dimensions	Lampways	Approx. Wt.
DIS123 128	300 x 1195 x 110	1 x 1200mm 28w T5	6.4 kg
DIS123 228	300 x 1195 x 110	2 x 1200mm 28w T5	6.5 kg
DIS153 135	300 x 1495 x 110	1 x 1500mm 35w T5	8.2 kg
DIS153 235	300 x 1495 x 110	2 x 1500mm 35w T5	8.3 kg
DSSF66 314 WB	540 x 599 x 68	3 x 600mm 14w T5	5.3 kg
DSSF66 414 WB	540 x 599 x 68	4 x 600mm 14w T5	5.3 kg
DSSF612 328 WB	540 x 1199 x 68	3 x 1200mm 28w T5	10.3 kg
DSSF612 428 WB	540 x 1199 x 68	4 x 1200mm 28w T5	10.3 kg

Add suffix to alternative if required e.g. DIS123 128 becomes DIS123 128 SSB

EMERGENCY Add suffix to above catalogue references

/M3 Integrally mounted self contained 3 hour emergency

/ST Integral 'Self Test' for emergency luminaires only
i.e. DIS123 128/M3/ST